

BASIC ASSESSMENT PROCESS

NOTICE OF THE PROPOSED CONSTRUCTION OF A MAKE-UP AND RAW WATER SUPPLY PIPELINE AT THE MEDUPI COAL FIRED POWER STATION IN LEPHALALE, LIMPOPO PROVINCE

Notice is given in terms of Regulation 41(2) of GNR 326 (07 April 2017) published under section 24 and 24D of the National Environmental Management Act (No. 107 of 1998) (NEMA) (as amended) for submission of applications for an Environmental Authorisation (EA) in respect of activities identified in terms of GNR 327 as Amended (7 April 2017)

BACKGROUND AND LOCATION

Eskom Holdings SOC Limited (Eskom) proposes to construct a make-up and raw water supply pipeline at the Medupi Coal Fired Power Station on farms Naauw Ontkopen 509 LQ, Portion 0 and Kuipersbult 511 LQ, Portion 0, in Lephalale, Ward 2, Lephalale Local Municipality, Limpopo. Medupi Power Station is being constructed with installation of Flue Gas Desulphurisation (FGD) system, to manage sulphur dioxide (SO₂) emissions, to each of the six 800 MegaWatt (MW) coal fired steam electricity generating units. The FGD Project will result in the addition of wet limestone open spray tower FGD systems to each of units. To support the FGD operation, additional raw water is required, and this water will be supplied from the Mokolo Crocodile Water Augmentation Project – Phase 2 (MCWAP-2). The proposed pipeline requires an environmental authorisation (EA) in terms of NEMA and the associated Environmental Impact Assessment (EIA) Regulations, 2014 as amended. Due to the nature of the project thresholds, Eskom is required to follow a Basic Assessment (BA) process to acquire environmental approval prior to the commencement of the Proposed Project.

ENVIRONMENTAL APPLICATION

The following listed activities are triggered:

- NEMA EIA Regulations: GNR 327 Activities 9, 12, 19 and 27.

REGISTRATION

WSP Environmental (Pty) Ltd (WSP) was appointed as the independent Environmental Assessment Practitioner (EAP) by Eskom to manage BA process. Parties wishing to formally register as interested and affected parties in order to receive more information and/ or raise their comment(s) on the proposed project, are requested to forward their full contact details to the EAP and disclose their direct and/or indirect business, financial, personal or other interest in the project. Any comments on the proposed project should be submitted to the EAP via the details provided below. Registered interested and affected parties will be forwarded all future project related correspondence and notified individually of additional opportunities to participate in the process.

DRAFT BASIC ASSESSMENT REPORT REVIEW PERIOD

The Draft Basic Assessment Report will be made available at the venues below for review and comment for 30 days from **13 May 2019 – 12 June 2019**.

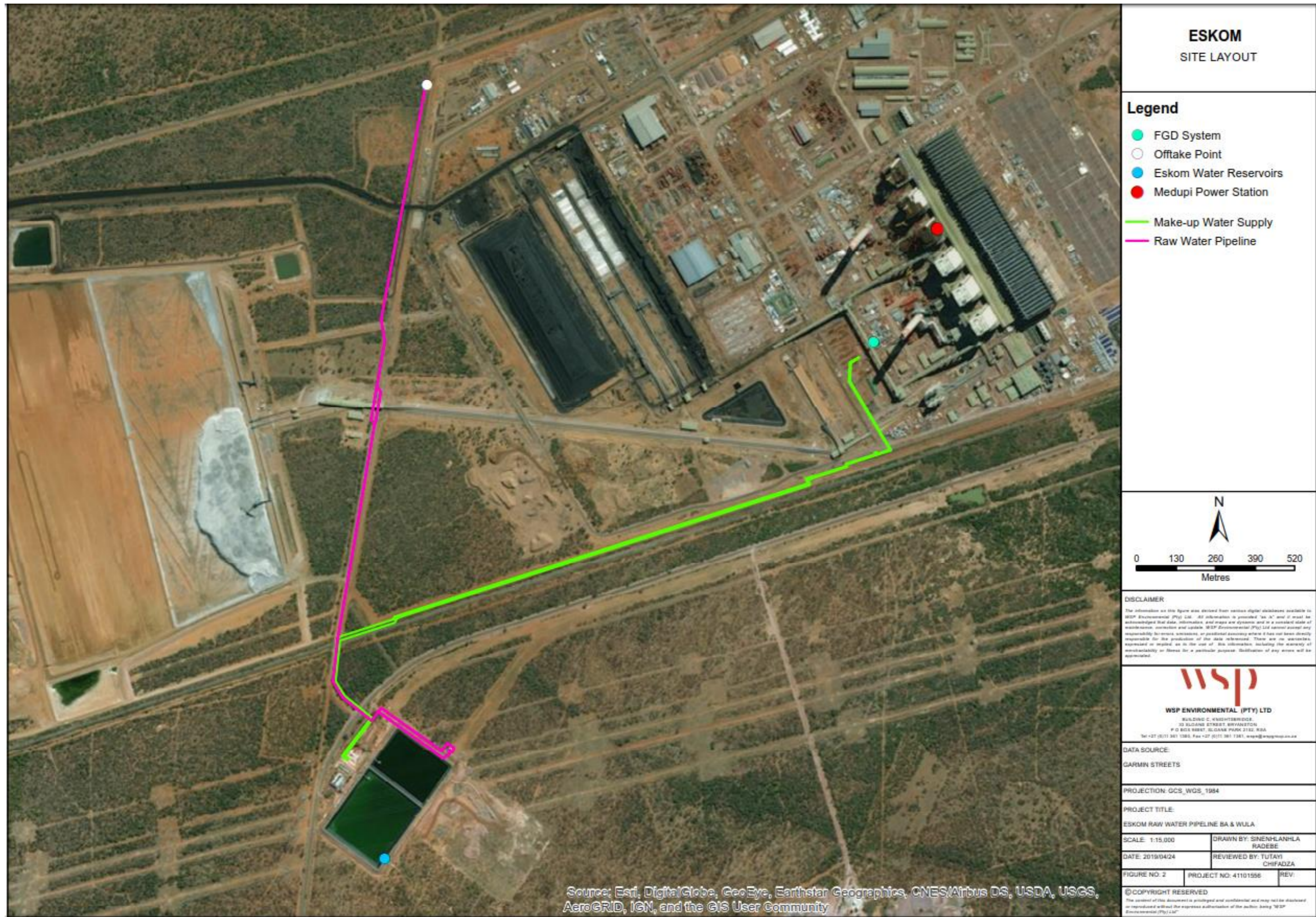
Area	Venue	Street Address	Contact No
Lephalale	Ellisras Public Library	Cnr Jan Lee and Magol Street	014 762 1453
Marapong (Lephalale)	Marapong Public Library	916 Phukubye Street, Marapong, Lephalale, 0556	014 762 1617
Lephalale	Mogol Golf Club	Wells Street, Lephalale, 0557	014 763 4948
WSP Website	https://www.wsp.com/en-ZA/services/public-documents		
Eskom Website	http://www.eskom.co.za/OurCompany/SustainableDevelopment/EnvironmentalImpactAssessments/Pages/Environment_Impact_Assessments.aspx (it will be saved as Medupi Make-up and Raw Water Supply Pipelines)		

Kindly ensure that all comments on the proposed project or requests to be registered as an Interested and Affected Party are submitted to the contact details provided herewith, by **12 June 2019**. Should you have any queries/comments, please do not hesitate to contact the EAP.

Name: Tutayi Chifadza | Tel: 011 361 1390 | Fax: 011 361 1381 | Email: Tutayi.Chifadza@wsp.com | Address: PO Box 98867, Sloane Park, 2152



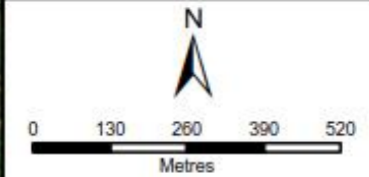
Figure 1: Site Layout



ESKOM
SITE LAYOUT

Legend

- FGD System
- Offtake Point
- Eskom Water Reservoirs
- Medupi Power Station
- Make-up Water Supply
- Raw Water Pipeline



DISCLAIMER

The information on this figure was derived from various digital databases available to WSP Environmental (Pty) Ltd. All information is provided "as is" and it must be acknowledged that data, information, and maps are dynamic and in a constant state of modification, correction and update. WSP Environmental (Pty) Ltd cannot accept any responsibility for errors, omissions, or positional accuracy where it has not been clearly indicated in the production of the data referenced. There are no warranties, expressed or implied, as to the use of this information, including the warranty of availability or fitness for a particular purpose. Diligence of any errors will be appreciated.



WSP ENVIRONMENTAL (PTY) LTD
BUILDING C, WINDHURSTBRIDGE,
23 SLOANE STREET, BRYANSTON,
P O BOX 8887, SLOANE PARK 2152, RSA
Tel: +27 (0)11 361 1385, Fax: +27 (0)11 361 1381, www.wspgroup.co.za

DATA SOURCE:

GARMIN STREETS

PROJECTION: GCS_WGS_1984

PROJECT TITLE:

ESKOM RAW WATER PIPELINE BA & WULA

SCALE: 1:15,000

DRAWN BY: SINENHLANHLA RADEBE

DATE: 2019/04/24

REVIEWED BY: TUTAYI CHIPADZA

FIGURE NO: 2

PROJECT NO: 41101556

REV:

© COPYRIGHT RESERVED

The content of this document is privileged and confidential and may not be disclosed or reproduced without the express authorization of the author being "WSP Environmental (Pty) Ltd".

Source: Esri, DigitalGlobe, GeoEye, Earthstar Geographics, CNES/Airbus DS, USDA, USGS, AeroGRID, IGN, and the GIS User Community

